

**MRCB** | Building System

# The Future of Construction



Greener



Faster



Smarter





# What is MRCB Building System?

■ MRCB Building System (MBS) is a modular construction technology for building homes and spaces sustainably.

MBS utilises Prefinished Prefabricated Volumetric Construction (PPVC), where prefabricated modules are manufactured in an offsite fabrication facility. Modules are then assembled with internal finishings like electrical, plumbing, and mechanical components.

Every module is then connected using a Candle-loc connection system to complete the building structure.



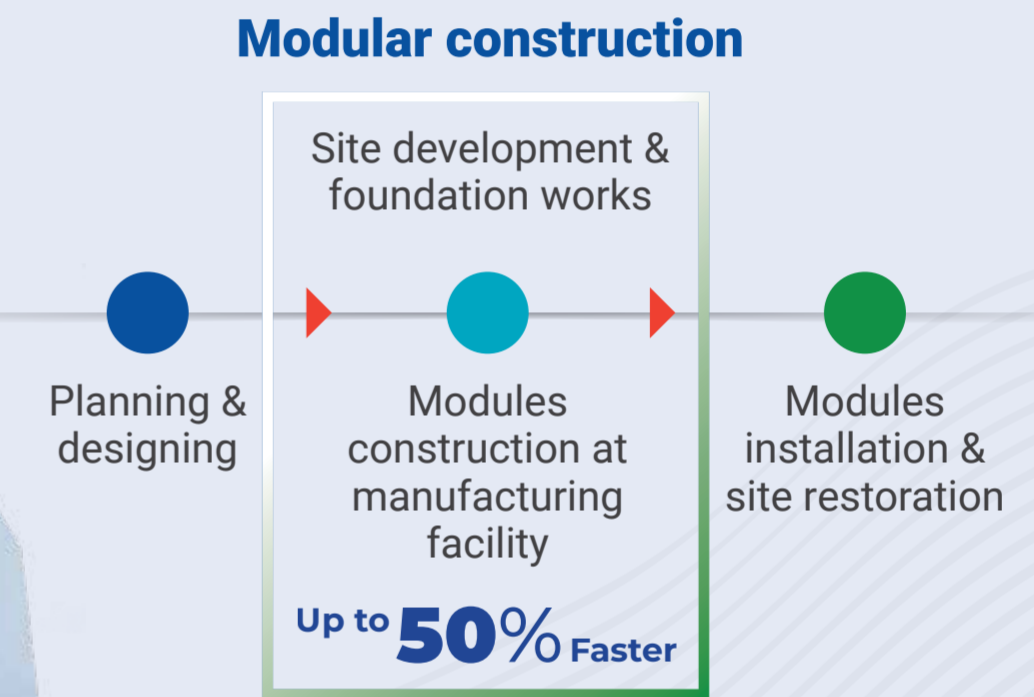
# The Future of Construction A Sustainable Construction Technology

## Towards Greener Approach

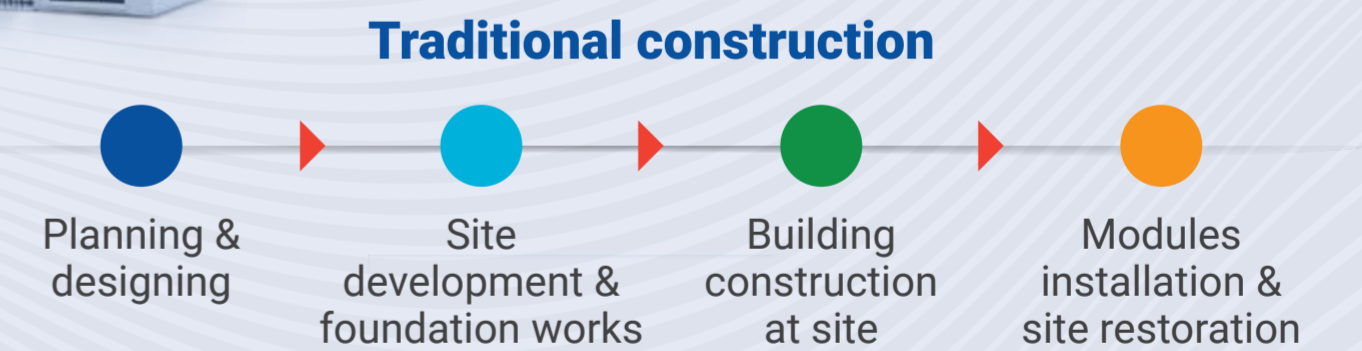
With up to 80% of construction completed indoors, the method helps to reduce carbon emissions emitted during construction



## Faster Project Completion



VS

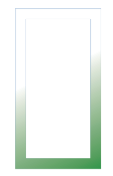


## A Smarter Technology

The building is constructed using the same materials and adheres to the same building codes and standards as conventionally built structures







# Meeting The Industry's Needs for Sustainable Construction



## Environment

- Reduce noise, dust, and pollution at the construction as up to 80% of construction is completed in the manufacturing facility.
- Less material waste due to the integrity of building materials preserved in an indoor facility.
- Less truck movement and machinery at the construction site, reducing carbon emissions.



## Labour

- Reduce the 3D (dirty, dangerous and difficult) work that attracts more skilled workers to the industry and lower dependency on unskilled foreign labour.
- Construction workers are protected from harsh weather conditions due to closed and indoor environment.
- Mitigate the risk of accidents at the construction site due to multiple processes completed from the ground level.



## Quality

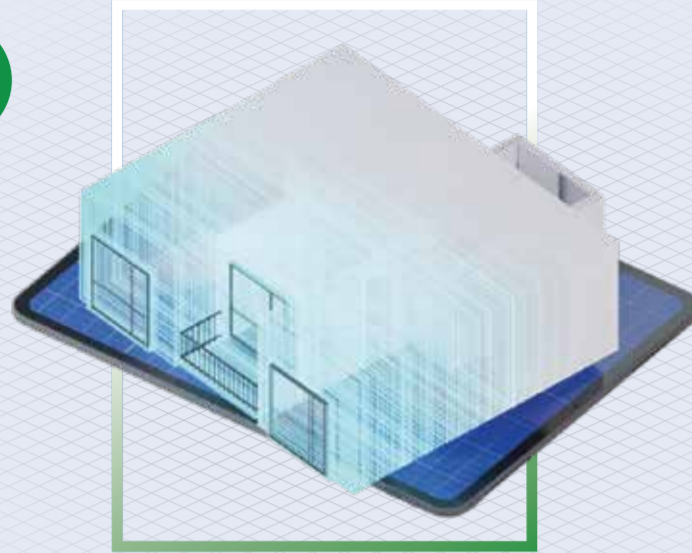
- Up to 80% of construction is completed in a manufacturing facility, which can speed up construction between 30% to 50%.
- Progress of construction will not be affected by weather conditions like rain and storm.
- Stringent quality programmes deployed at every stage of module construction before leaving the facility.





# MRCB Building System (MBS) Construction Process

1



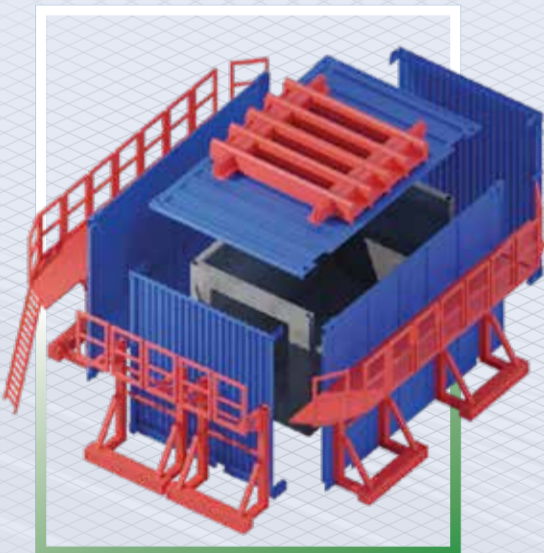
The building is planned and designed using Building Information Modelling (BIM).

2



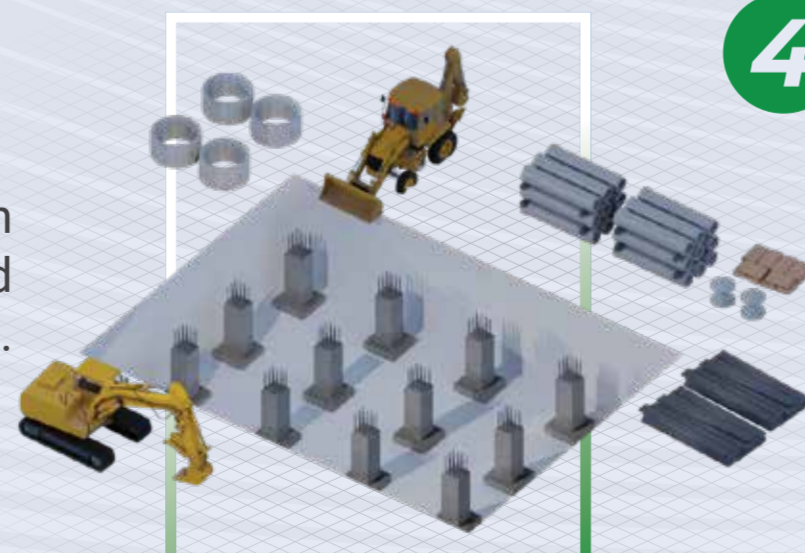
Our modular construction process takes place offsite in a controlled manufacturing plant, sheltered from harsh weather conditions.

3



Here, the modules are constructed and prefinished with mechanical, electrical, plumbing components and fixtures including tiling, paintwork, flooring and doors.

4



Concurrently, foundation works are being commenced at the construction site.

5



Rigorous inspections are carried out to ensure top-notch construction quality, eliminating defects.

6



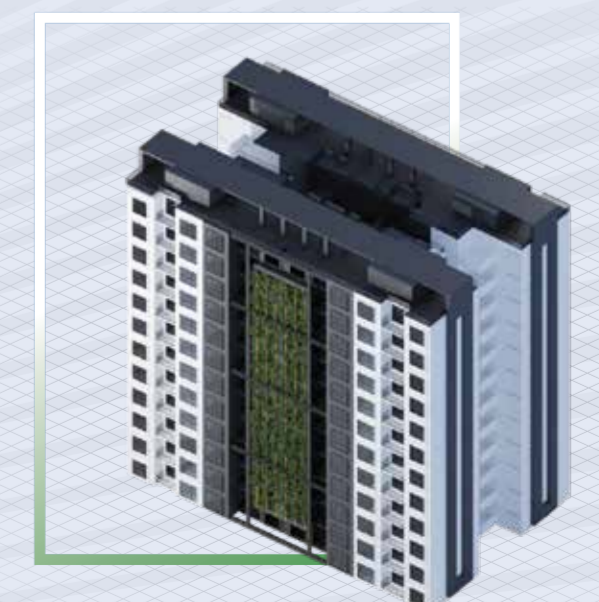
Prefinished modules are loaded onto trucks and transported to the construction site.

7



At the construction site, modules are lifted, assembled and interlocked together to form a building.

8



Once assembled, they are identical and virtually indistinguishable from the most sophisticated conventionally built buildings.



## **MRCB Building System**

Level 30, Menara Allianz Sentral, No. 203, Jalan Tun Sambanthan,  
Kuala Lumpur Sentral 50470 Kuala Lumpur, Malaysia

Tel: 603 2786 8080 / 603 2859 7070 Fax: 603 2780 7988

[www.mrcb.com](http://www.mrcb.com)

